

Design Statement:

The design goal is to provide a clean and updated kitchen which will improve the amount of usable space while seamlessly blending with the aesthetic of the home.

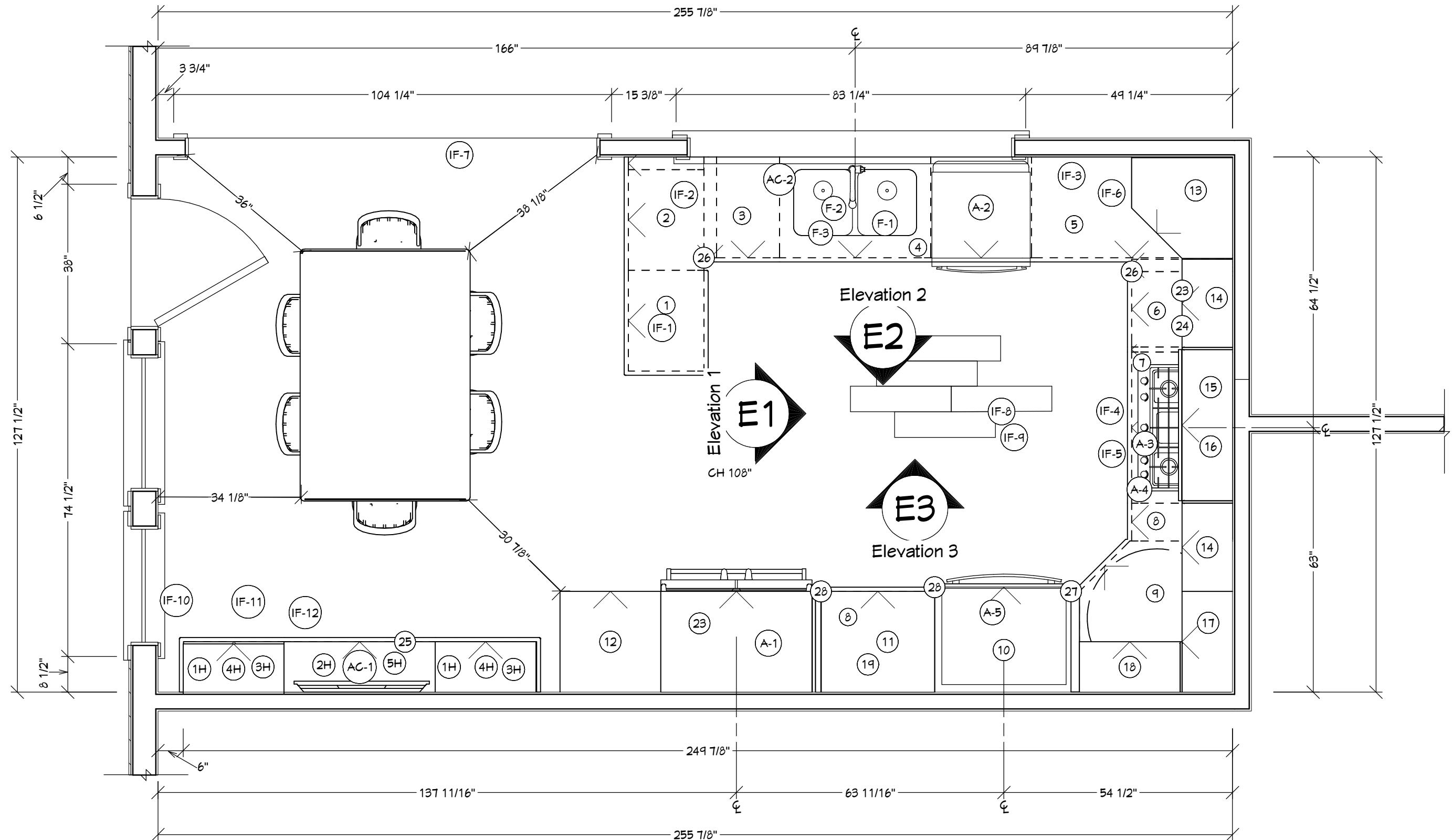
Design challenges will be met by the following:

- Clean, flesh, updated materials
- Addition of functional counter space
- Light colored built in hutch to compliment and balance the countertops
- Glass doors to accent prized china collection
- Appliance garage to maintain tidy working space
- Simple bright fixtures and hardware to modernize the cabinets
- Counter depth refrigerator to maximize traffic space
- Subway tile carried throughout the kitchen backsplash, to form a cohesive feel
- Warm detail accent above the range and along the backsplash to add interest and draw the eye
- Additional lower storage areas and cabinets with dual access
- Light colored flooring, counters, and ceiling to keep the kitchen fresh and airy
- Hardware that is simple neat, and straightforward witch does not distract from design
- Addition of under cabinet lights to provide both ambient and task lighting
- Clear glass and clean lines of the lighting fixtures to provide just the right amount of



TABLE OF CONTENTS:

1. TITLE PAGE
2. FLOOR PLAN
3. FLOOR PLAN SPECIFICATION
4. CONSTRUCTION PLAN
5. MECHANICAL PLAN
6. ELEVATION 1
7. ELEVATION 2
8. PERSPECTIVE



FLOOR PLAN SPECIFICATIONS

#	CABINETS	QUANITY	DIMENSIONS (WxHxD)	DISCRIPTION	NOTES
1	PB18FH RD18 RTKR DMB	1	36X18X18	FULL HEIGHT PENINSULA BASE	REDUCES DEPTH, REDUCED TOE KICK, PANEL (HAND APPLIANCES)
2	B24 BUTTFH RD15	1	36X24X15	FULL HEIGHT BASE	BLIND CORNER (SPECIALITY COOKING VESSELS, GRILL EQUIPMENT)
3	BWBT15-2	1	36X24X15	BASE CABINET	1 DOOR, 1 DRAWER, 2 FACTORY INSTALLED WASTEBASKETS
4	SB36 BUTT STO	2	36X36X24	SINK BASE CABINET	SINK (CLEANING SUIPLIES, PAPER PRODUCTS)
5	BLB48/51	1	48X36/24	BLINK CORNER BASE CABINET	INSTALL RICHELIEU PRO-ARC POWER SLIDE #9596910, RD12 TOP WOOD TIERED CULTERY DIVIDER KIT (COFFEE STATION)
6	B18 FHFA2FWT	1	18X36X24	FULL HEIGHT BASE CABINET	1 DOOR, 1 DRAWER, 2 DEEP ROLL OUT TRAYS (FOR POST AND PANS)
7	SB36 BUTT STO	1	36X36X24	SINK BASE CABINET	COOK TOP
8	BTDP9	1	9X36X24	FULL HEIGHT BASE TAY DIVIDER PULLOUT	BASE TRAY DIVIDER PULL OUT (FOR BAKING EQUIPMENT)
9	BER36L	1	36X36X24	BASE EASY REACH	
10	OVD3393 AS BUTT	1	33X93X25	DOUBLE OVEN CABINET	MODIFY ID 25"
11	DB27	1	27X36X24	DRAWER BASE CABINET	3 DRAWERS (FOR LEFTOVER CONTAINERS, COOKING UTENSILS, FOOD WRAPPING MATERIALS)
12	UT24X24X93 PCDS BUTT	1	24X93X24	UTILITY CABINET 4 BUTT DOORS, DEEP ROLL OUT TR	FULL ACCESS CUSSION CLOSE GLIDES (FOR FOOD STORAGE)
13	CWT2448	1	17X48X12	CORNER WALL WITH APPLIANCE GARAGE	INSTALL RICHELIEU PRO-ARC POWER SLIDE #9596910
14	W2139	2	21X39X12	WALL CABINET	(FLATWATE, GLASSWARE)
15	W2736 BUTT	1	36X24X14	WALL CABINET, 2 BUTT DOORS	
16	V36RP	1	36X10 1/2X3/4	RAOSED PANEL ARCHED VALANCE	
17	BLW241239	1	24X39X12	BLIND WALL CABINET	
18	W2439	1	24X39X12	WALL CABINET	
19	W2739 BUTT	1	27X39X24	WALL CABINET, 2 BUTT DOORS	ID 24
20	W3624X24 DP BUTT	1	36X24X24	REFRIDGERATOR WALL CABINET	
21	BTK8	60	8' SHEETS	TOE KICK	TO BE CUT ON SITE
22	RP96	1	96X24	REFRIDGERATOR WALL CABINET	
23	CROWN MOLDING	40	8' SHEETS	TRADITIONAL CLASSIC	MAPLE AUBURN GLAZE
24	LIGHT RAIL	16	8' SHEETS	TRADITIONAL CLASSIC	MAPLE AUBURN GLAZE
25	CROWN MOLDING	12	8' SHEETS	TRADITIONALL CLASSIC	WHITE AUBURN GLAZE
26	FILLER	2	3X34.5X24		
27	PARTITION	1	2X93X36		
28	PARTITION	2	3/4X93X24		

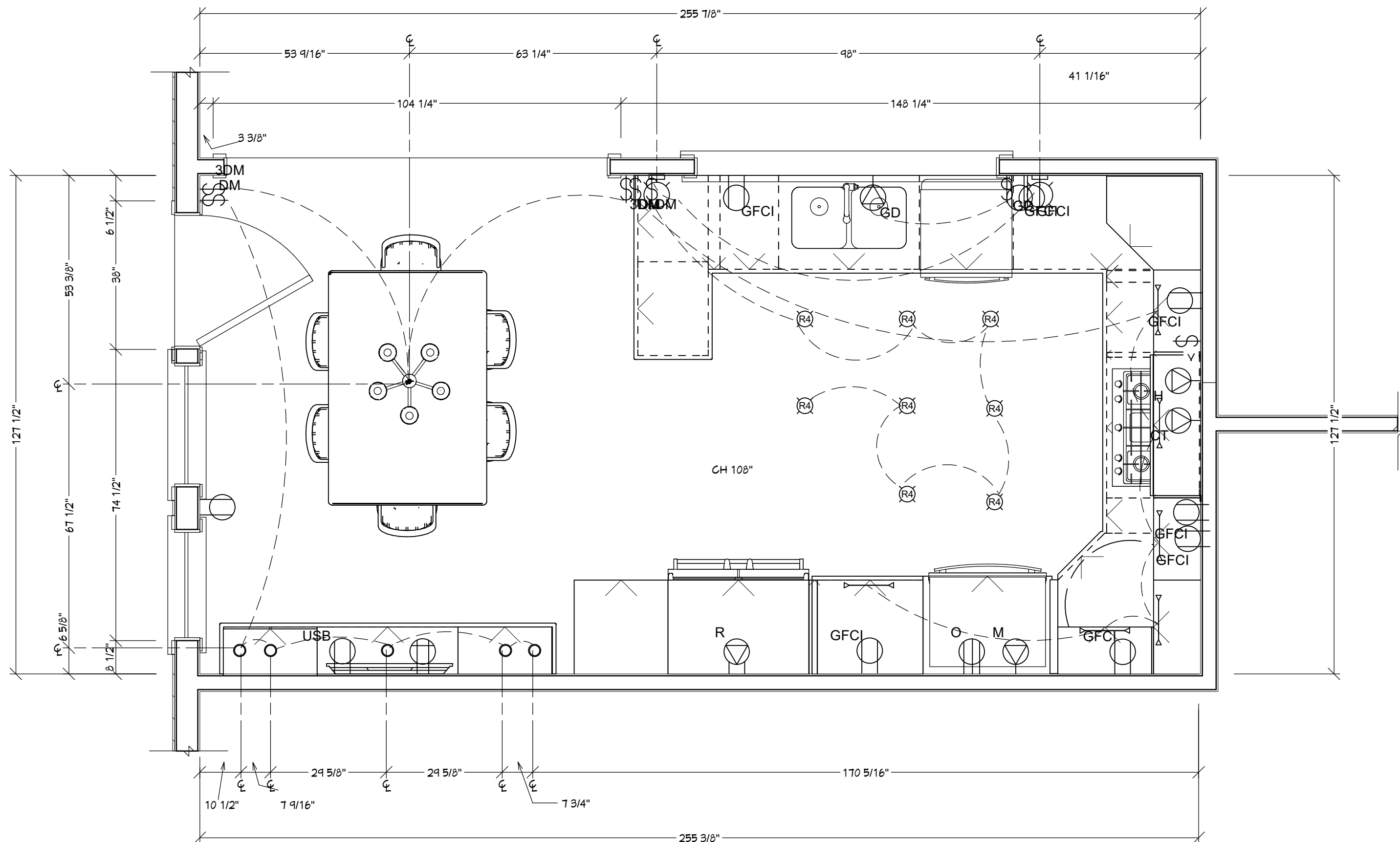
*ALL BASE CABINETS TO BE WAYPOINT, STYLE 620, MAPLE AUBURN GLAZE, SOLID STANDARD OVERLAY, FRAMMED CONSTRUCTION
*ALL WALL CABINETS TO BE WAYPOINT, STYLE 621, MAPLE AUBURN GLAZE, SOLID STANDARD OVERLAY, FRAMMED CONSTRUCTION
* ALL KNOBS TO BE WAYPOINT BUTTON KNOB SATIN NICKLE KNOB 3213SN

HUTCH					
1H	BD24 WTCDAK24	2	24X36X12	3 DRAWER BAS CABINET	RD12 TOP WOOD TIERED CULTERY DIVIDER KIT
2H	BD24 WTCDAK24	2	36X36X24	FULL HEIGHT BASE CABINET	RD12 (SERVING TRAYS)
3H	W2439 BUTT CLEAR CLASS	2	24X39X12	WALL CABINET	20FD, CLEAR GLASS 12" SQUARE
4H	W2418 BUTT CLEAR GLASS	2	24X18X12	WALL CABINET	20FD, CLEAR GLASS 12" ARCH
5H	W3618 BUTT CLEAR GLASS	1	36X18X12	WALL CABINET	20FD, CLEAR CLASS 18" ARCH

*HUTCH BASE CABINETS TO BE WAYPOINT, STYLE 620, PAINTED LINEN, SOLID STANDARD OVERLAY, FRAMED CONSTRUCTION
*HUTCH WALL MIDDLE CABINETS TO BE WAYPOINT, STYLE 620, PAINTED LINEN, SOLID STANDARD OVERLAY, FRAMED CONSTRUCTION
*HUTCH WALL TOP CABINETS TO BE WAYPOINT, STYLE 621, PAINTED LINEN, SOLID STANDARD OVERLAY, FRAMED CONSTRUCTION

FLOOR PLAN SPECIFICATIONS CONTINUED

#	APPLIANCE	BRAND	MODEL#
A1	REFRIDGERATOR	COM	
A-2	DISHWASHER	JENN-AIR	JDB9000CWS
A-3	COOK TOP	JENN-AIR	JGC1530BS
A-4	DOWNDRAFT VENTILATION	JENN-AIR	JXD7030YS
A-5	MICROWAVE/RANGE	JENN-AIR	JMW3430DS
#	FIXTURES	BRAND	
F-1	SINK	KHOLER	K-3820-1-NA
F-2	FAUCET	KHOLER	K-72218-CP
F-3	GARBAGE DISPOSAL	INSINKERATOR	BADGER 900
#	INTERIOR FINISHES	BRAND	MODEL#
IF-1	COUNTER TOP	DALTILE	G339
IF-2	BACKSPLASH	DALTILE	K176(3)
IF-3	FIELD TILE	DALTILE	K176(3)
IF-4	TRASITIONAL TILE	METAL COAT TILES AND DESIGN	TMBL-0751200
IF-5	DECORATIVE TILE	DALTILE	OS01
IF-6	WALL TILE GROUT	TEC	927 LIGHT PEWTER
IF-7	TRANSITION TILE TO WOOD	DALTILE	SINGLE HOLLYWOOD BEVELED THRESHOLD
I-F8	FLOORING	DALTILE	FP94
IF-9	FLOOR GROUT	TEC	927 LIGHT PEWTER



MECHANICAL PLAN LEGEND

	LAMPS PLUS ILLUME WHITE 12" WIDE LED UNDER CABINET LIGHTS STYLE# 6R028 75W		DUPLEX RECEPTACLES WITH GROUND FAULT CIRCUIT INTERRUPTER AT 39" AFF
	LAMPS PLUS BRUSHED NICKEL WITH ETCHED OPAL 10" WALL SCONCE STYLE# 97746 40W		DUPLEX RECEPTACLES WITH GROUND FAULT CIRCUIT INTERRUPTER AT 43" AFF
	LAMPS PLUS ARIANO 5 LIGHT CHANDELIER BY POSSINI EURO DESIGN STYLE# T8825 75W		DUPLEX OUTLET 43" AFF
	LAMPS PLUS MVP WHITE SINGLE UNDER CABINET LED PUCK LIGHT FOR HUTCH STYLE# 8F061 75W		DUPLEX OUTLET 12" AFF
	JENN-AIR DISHWASHER 120V 20 AMP FUSED HARDWIRE		DUPLEX RECEPTACLES WITH GROUND FAULT CIRCUIT INTERRUPTER UNDER CABINET
	INSINKERATOR BADGER 900 GARBAGE DISPOSAL 120V HARD WIRE		DUPLEX OUTLET UNDER CABINET
	JENN-AIR GAS COOKTOP 120V 15AMP FUSED HARDWIRE		2 USB CHARGER OUTLET 43" AFF
	JENN-AIR 30" DOWNDRAFT VENT SYSTEM 120V 15 AMP HARDWIRE VTO, CFM		TRIPLEX OUTLET FOR TELEVISION 12" AFF
	JENN-AIR MICROWAVE/WALL OVEN 240 V 30 AMP HARDWIRE		
	JENN-AIR MICROWAVE/WALL OVEN 240 V 30 AMP HARDWIRE		SINGLE POLE SWITCH GARBAGE DISPOSAL 43" AFF
	CUSTOMER REFRIGERATOR 120V 6 AMP		SINGLE POLE SWITCH FOR DOWNDRAFT VENTILATION 43" AFF
			3 WAY SLIDING DIMMER SWITCH 48" AFF
			SINGLE POLE SLIDING DIMMER 48" AFF

